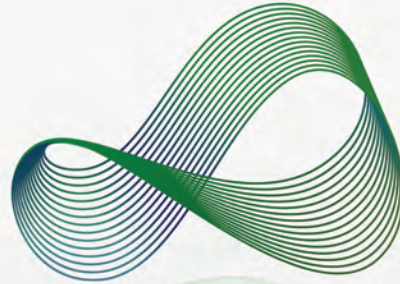


EASY APPLICATION INSTRUCTIONS



AURORA
PATENT PENDING
SEE THE DIFFERENCE

ECLIPSE

AMNION MEMBRANE TISSUE



OPHTHALOGIX
an Evologics Company

www.ophtalogix.com

NEED TO PLACE AN ORDER? GO TO OPHTHALOGIX.COM OR CALL 888-772-6646

EASY APPLICATION INSTRUCTIONS

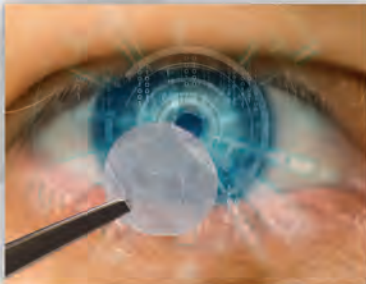


ECLIPSE

AMNION MEMBRANE TISSUE

REQUIRED MATERIALS

- ANESTHETIC DROPS • ANTIBIOTIC DROPS • STERILE GLOVES
- STERILE FORCEPS • WECK CELL, ROUNDED OPHTHALMIC SPONGE



INSTRUCTIONS FOR USE

1. PLACE UNOPENED TISSUE, CONTACT LENS CASE, FORCEPS, ROUNDED OPHTHALMIC SPONGE AND OTHER MATERIALS NEEDED ON WORKSPACE. KEEP THE MEMBRANE COVERED UNTIL YOU ARE READY FOR PLACEMENT.
2. IF USING AN EYE SPECULUM PLACE IT NOW.
3. INSTILL ONE DROP OF TOPICAL ANESTHETIC TO EYE, FOLLOWED BY ONE NON-VISCOUS TOPICAL ANTIBIOTIC DROP.
4. USE SOFT CELL/WECK CELL SPONGE TO DRY CORNEAL SURFACE.
5. CAREFULLY OPEN POUCH (TISSUE IS VERY LIGHTWEIGHT AND CAN EASILY BE DROPPED).
6. USE SMOOTH TIP FORCEPS AND REMOVE TISSUE FROM POUCH (GROOVED FORCEPS CAN DAMAGE THE TISSUE).
7. PLACE GRAFT CENTRALLY ON CORNEA; USING SPONGE OR SIDE OF FORCEPS TO SMOOTH GRAFT TO CORNEAL SURFACE.
8. REMOVE CONTACT LENS FROM CASE, PLACE LENS OVER CORNEA.
9. INSTRUCT PATIENT TO KEEP EYES CLOSED FOR TWO-THREE MINUTES WITHOUT RUBBING EYES.
10. INSTRUCT PATIENT TO USE APPROPRIATE EYEDROPS FOR LUBRICATION AND ANTIBIOSIS, PLAN TO SEE PATIENT IN 3-4 DAYS, SOONER IF THE PATIENT DISCOMFORT / REDNESS / SWELLING.